

Player Registration

Please Print and Complete All Information

Best Ball Scramble Format

___ Competitive Division ___ Fun Division

Golfer #1 _____

Handicap _____

Address _____

City, State, Zip _____

Phone _____

Golfer #2 _____

Handicap _____

Address _____

City, State, Zip _____

Phone _____

Golfer #3 _____

Handicap _____

Address _____

City, State, Zip _____

Phone _____

Golfer #4 _____

Handicap _____

Address _____

City, State, Zip _____

Phone _____

Return to: **WCDC PO Box 70 Newark, MD 21841**

Your Day Will Include

- 18 holes of golf on the Seaside Course
- Golf Cart
- Buffet lunch, full dinner and open bar catered by WCDC clients
- Closest-to-the pin competition
- Longest drive competition
- Hole-in-one prize
- Door prize for every golfer
- Goody bag
- Free beverages on course

Sponsored By



For more information call

Cecil Tull at ABC Printers @ 410.213.2022

Jack Ferry at WCDC @410.632.2382 x117



Working Toward a Brighter Future

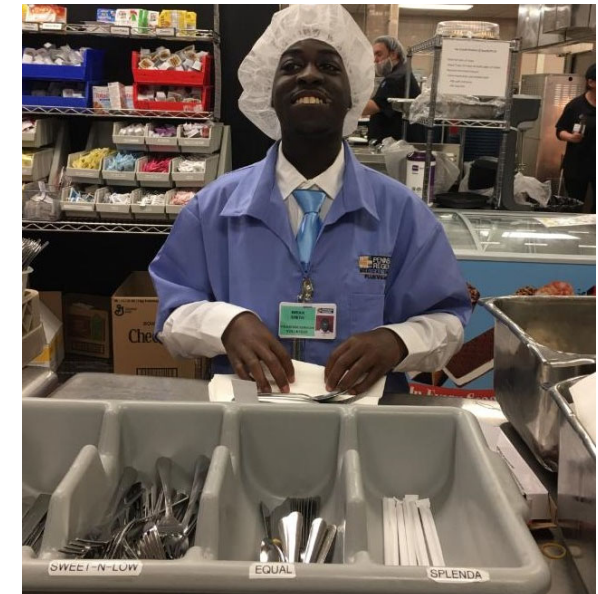
Worcester County Developmental Center

13th Annual Golf Tournament

Sponsored By:



June 11, 2019



Ocean City Golf Club

Seaside Course



Working Toward a Brighter Future

Worcester County Developmental Center

13th Annual Golf Tournament

Sponsored By:



Program

Tuesday, June 11, 2019

12:30 P.M. - Registration Opens

Lunch Is Served

1:30 P.M. - Shotgun Start

Dinner/Awards

All proceeds from the golf tournament go towards client services. Your donation helps us provide employment opportunities, residential services, day habilitation programs and community-based supports to adults who live with a disability. Your partnership helps WCDC in its mission to enable our clients to achieve their highest level of economic and social independence. All contributions are tax deductible in accordance with the Internal Revenue Code.

WCDC is a 501 © (3) corporation

SPONSORSHIP OPPORTUNITES

Eagle Sponsorship: \$2,000 includes

- Team of four players in the tournament
- Corporate logo on banner to be displayed at tournament
- Introduction at awards ceremony
- Four (4) tickets to post-tournament meal
- Corporate logo to be displayed on Golf Tournament page of website
- Listing in tournament program and post-tournament display ad

Birdie Sponsorship: \$1,000 includes

- Team of two players in the tournament
- Two (2) tickets to post-tournament meal
- Corporate logo to be displayed on Golf Tournament page of website
- Listing in tournament program and post-tournament display ad

Dinner Sponsorship: \$1,500

- Corporate logo banner to be displayed at tournament
- Introduction at awards ceremony
- Corporate logo displayed on Golf Tournament webpage
- Listing in tournament program

Lunch Sponsorship: \$1,500

- Corporate logo banner to be displayed at tournament
- Introduction at awards ceremony
- Corporate logo displayed on Golf Tournament webpage
- Listing in tournament program

Return your sponsorship by May 17 to insure maximum exposure for your business.

WCDC P.O. Box 70 Newark, MD 21841

SPONSORSHIP REGISTRATION

Name: _____

Organization: _____

Team Sponsor: _____

(if different from Organization)

Address: _____

City, State, Zip: _____

Daytime Phone: _____

Cell Phone: _____

_____ **Team of 4 & Hole Sponsor (\$600)**

_____ **Team of 4 (\$500)**

_____ **Single Golfer (\$125)**

_____ **Hole Sponsorship (\$125/hole)
Name on hole sign**

_____ **Cart Sponsorship (\$50/cart)
Name on cart sign**

_____ **In-Kind Gifts (for prizes and goody bags)**

_____ **I am unable to participate but would like to support Worcester County Developmental Center: enclosed is a tax deductible contribution in the amount of \$_____**

*WCDC is a 501(c)(3) organization located in Worcester County whose mission is to enable adults with intellectual disabilities to achieve their highest level of economic and social independence.

Return your sponsorship by May 21 to insure maximum exposure for your business